

## **Community Select Committee 2 November 2015**

### **Night Time Economy (NTE) - progress against recommendations from the committee's review in November 2012**

#### **Introduction**

This briefing is in response to the committee's request to 'consider progress against the review into the Night Time Economy which was completed on 12 Sep 2012.'

To provide some background information for this briefing, county community safety unit (CCSU) analysts provided SoSafe with an analysis of alcohol related antisocial behaviour (ASB) taking place in Stevenage during the period from 01/04/2012 to 31/03/2015. Please see **Appendix A** for the full analysis.

#### **Summary of data**

Alcohol related ASB was very low during the period analysed – 357 out of 8485 recorded ASB incidents (4.2%).

Alcohol related ASB is now almost insignificant at the Leisure Park, due to the current trend for family based activities and businesses, and more 'up market' licensed eating establishments. The main hot spot areas for alcohol related ASB are located at the Town Centre and Old Town (High Street).

The highest type of alcohol related ASB is recorded as 'nuisance' and the peak months for incidents were July, followed by May, then October. Most alcohol related ASB incidents happen between 19:00 and 22:59, with the significant peak being at 22:00. The majority of incidents occur on a Saturday.

#### **Recommendations from September 2012 select committee**

##### **1. That SoSafe continues to fund the Taxi Marshal scheme.**

Taxi marshals have been funded by SoSafe continuously since the previous review. The taxi marshal now works solely in the Old Town High Street for two nights per week (Friday and Saturday), at a cost of £3300 pa to SoSafe (16.5% of the total budget provided by the Police and Crime Commissioner (PCC)). This is match funded by the CCSU, who manage the contract with Bradsec. Continued support for this service is a high priority for SoSafe. However, the PCC is assessing the way in which his grants are provided to CSPs; therefore, there is uncertainty as to whether or not the CSP will have funds available for the taxi marshal service in 2016/17.

##### **2. That SoSafe continue to part fund Stevenage Street Pastors.**

SoSafe continues to fund Street Pastors whenever possible and if funding is requested from the organisation. £1000 has been set aside from the 2015/16 budget, which will be granted to Street Pastors for their work in the Old Town High Street at peak times of the year, in particular Christmas and New Year.

**3. That Stevenage Borough Council Licensing Officers and the Operational Delivery Group (ODG) investigate introducing as a condition or requirement on new licenses that the licensee become members of Pub Watch.**

New licensees are encouraged to join Pub Watch on a voluntary basis. There is no legislative basis to compel licensees to comply. SoSafe has funded PubWatch online (at a cost of £500 pa) since 2014, which has helped to increase membership considerably (10 additional members in Q1 2015). We have found that licensees are much more likely to engage while this tool is available. The online tool helps licensees to communicate quickly and effectively. It provides an online forum, quick messaging service (which can also be routed to a mobile phone), and information (including photos) about people banned from Stevenage licensed premises.

Pub Watch meetings are now very well attended, with an effective chair and collaborative members. The Police and SBC licensing teams have built up very effective relationships with members. This has a positive knock on effect in terms of quality control of door staff and relationships with external security companies.

**4. That Stevenage Borough Council Licensing Officers and the ODG discuss arranging more joint licensing visits to pubs with SBC licensing officers and the police.**

SoSafe continues to support and schedule joint licensing visits. This has become part of the normal weekly routine for police and council officers, and works well in terms of collaboration and consistency of enforcement. This type of partnership working also means that licensees have a consistent point of contact with the Council and Police, and allows for greater negotiating power when amending or instigating licenses.

**5. That the Safer and Stronger Communities Development and Scrutiny Committee supports the current SoSafe priorities to tackle incidents resulting from the NTE....**

SoSafe thanks the committee for its continued support in these matters. **Appendix B** highlights the current actions being taken by SoSafe in regards to the NTE.

**6. That officers monitor and report back on the impact of the partial/ reduced street lighting regime on crime and accident data a year after its introduction in Stevenage.**

There is no evidence to suggest that crime rates have increased since part night lighting was introduced. The County Council Overview and Scrutiny Committee conducted 'An examination of the County Councils Policy of Part Night Lighting' in October 2013. Attached for Members' information.

**Conclusion**

The NTE in Stevenage has changed considerably over the last three years. Night clubs have continued to close on the leisure Park, with more family based and 'up market' establishments opening. Drinking culture has shifted to the Old Town, but this is counterbalanced by a trend

for pubs to provide all day food; which means that more families are being attracted to the area during the day and early evening.

There are several establishments in the Old Town with late licenses. However, police and council staff have built up good relationships with licensees and security staff, through regular licensing visits, and do not encounter regular issues late at night. Licensees are also broadly compliant with suggestions made by the police and council regarding amendments to licenses. This has been helped by the implementation of Pub Watch online and a widening of general membership.

Taxi marshals continue to work in the Old Town and communicate well with security and pub staff. They continue to be a helpful presence, in order to ensure people get home safely. However, the provision of this service may have to be reviewed as it is dependent on receipt of the PCCs community safety grant and continued support from the CCSU.

## Appendix A

Information provided by the county community safety unit for the period 01/04/12 to 31/03/15.

### Alcohol Related ASB

From the 8485 recorded incidents of ASB in the period analysed 357 (4.2%) were recorded as Alcohol/Alcohol related incidents.

**Figure 17 – Number of Alcohol related ASB within Stevenage CSP between 01/04/12 & 31/03/15**

Beat/Year	2012	2013	2014	2015	Total
E1A - Bedwell		54	82	16	152
E1B - Old Town		29	27	4	60
E1N - Woodfield		13	11	1	25
E1L - Martins Wood		5	16	1	22
E1G - Roebuck		9	9	1	19
E1F - Shephall		10	8		18
E1M - Long Meadow		4	3	5	12
E1C - Pin Green	1	5	4	1	11
E1J - Symonds Green		6	4		10
E1E - Chells Manor		4	4		8
E1H - St. Nicholas		3	5		8
E1D - Chells		5	2		7
E1K - Bandle Hill		1	2		3
E1P - Great Ashby			2		2
<b>Total</b>	<b>1</b>	<b>148</b>	<b>179</b>	<b>29</b>	<b>357</b>

During the period analysed, there have been a total of 357 Alcohol ASB incidents. The top beat was E1A – Bedwell (n=152), followed by E1B- Old Town (n=60).

The top 5 beats for Alcohol incidents were E1A – Bedwell (n=152), E1B- Old Town (n=60), E1N – Woodfield (n=25), E1L – Martins Wood (n=22) and E1G – Roebuck (n=19).

**Figure 18 – Number of Alcohol ASB incidents by month by beat**

Beat/Month	Jan	Feb	Mar	Apr	May	Jun	Jul	Aug	Sep	Oct	Nov	Dec	Total
E1A - Bedwell	11	11	12	6	14	12	20	8	13	16	12	17	152
E1B - Old Town		6	2	6	8	7	4	8	5	6	5	3	60
E1N - Woodfield	1	2	2		2	3	2	1		8	2	2	25
E1L - Martins Wood	2		1		3	3	3	1	3	1	2	3	22
E1G - Roebuck	1	1		2	3	1	1	1	2	4	1	2	19
E1F - Shephall		1	1	1	3	1	2	4	2	2		1	18
E1M - Long Meadow	2	2	3	1			3					1	12
E1C - Pin Green	1		1	1	1	1	3	2		1			11
E1J - Symonds Green			1		1		2	2	1		2	1	10
E1E - Chells Manor	1			1	2		2			1	1		8
E1H - St. Nicholas			2		1	1		1	1		2		8
E1D - Chells		1					3		2			1	7
E1K - Bandley Hill								1		1		1	3
E1P - Great Ashby	1				1								2
<b>Total</b>	<b>20</b>	<b>24</b>	<b>25</b>	<b>18</b>	<b>39</b>	<b>29</b>	<b>45</b>	<b>29</b>	<b>29</b>	<b>40</b>	<b>27</b>	<b>32</b>	<b>357</b>

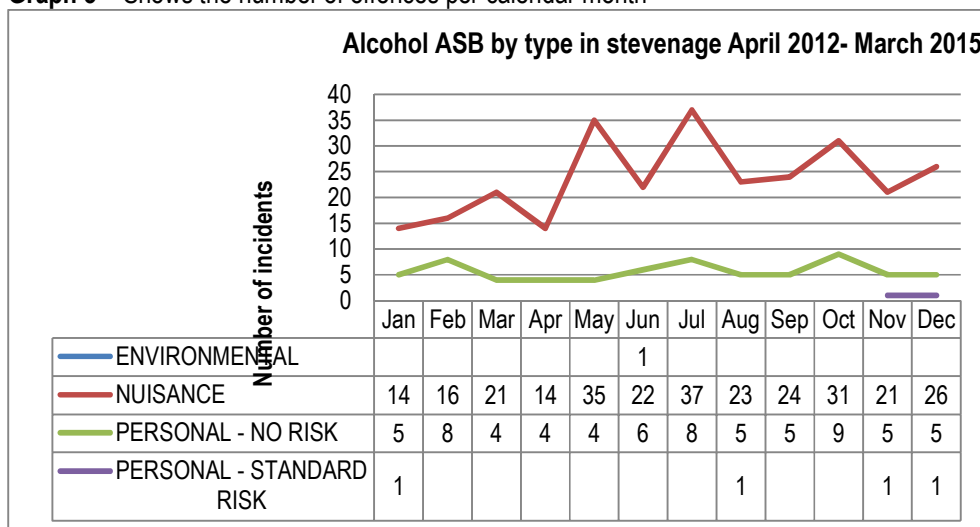
From the above table you can see the E1A – Bedwell has the highest number of recorded Alcohol related ASB this accounts for 42.6% of all Alcohol related ASB incidents in Stevenage.

**Figure 19 – the below provides a breakdown of the type of ASB the 357 Alcohol related Incidents come under.**

ASB Type	2012	2013	2014	2015	Total
NUISANCE	1	113	150	20	284
PERSONAL - NO RISK		34	26	8	68
PERSONAL - STANDARD RISK			3	1	4
ENVIRONMENTAL		1			1
<b>Total</b>	<b>1</b>	<b>148</b>	<b>179</b>	<b>29</b>	<b>357</b>

The highest category for Alcohol ASB was Nuisance with 284 which was 80% of the total for the period analysed. From the overall total ASB recorded in this period Alcohol accounted for 4.2% of the total, Alcohol Nuisance accounts for 5.2% of the total Overall Nuisance ASB.

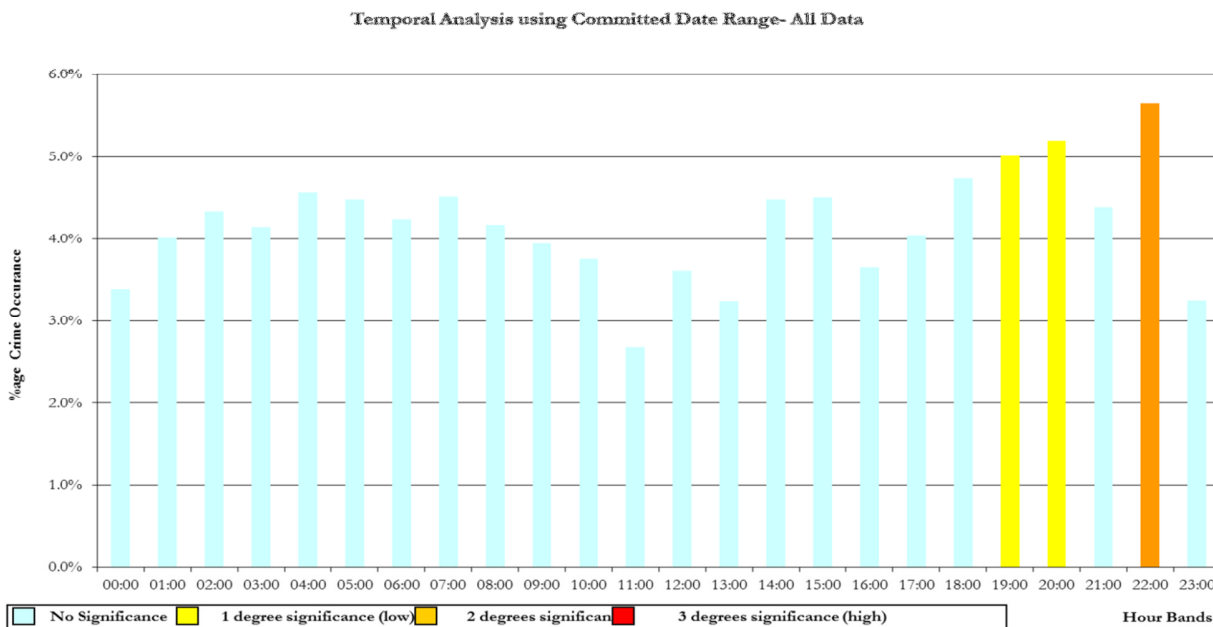
**Graph 3 – Shows the number of offences per calendar month**



The highest type of Alcohol ASB recorded was Nuisance and the highest months for these incidents were July (n=37), followed by May (n=35) then October (n=31).

**Peak Days and Times for Alcohol ASB**

**Figure 20 – Illustrates Time Peaks for Alcohol in Stevenage (2012-2015)**



The above graph shows that most of the Alcohol related ASB incidents that occur in Stevenage happen between 19:00 and 22:59, with the significant peak being at 22:00.

The Majority of the incidents happen on a Saturday which is the same as all other ASB within the period analysed.

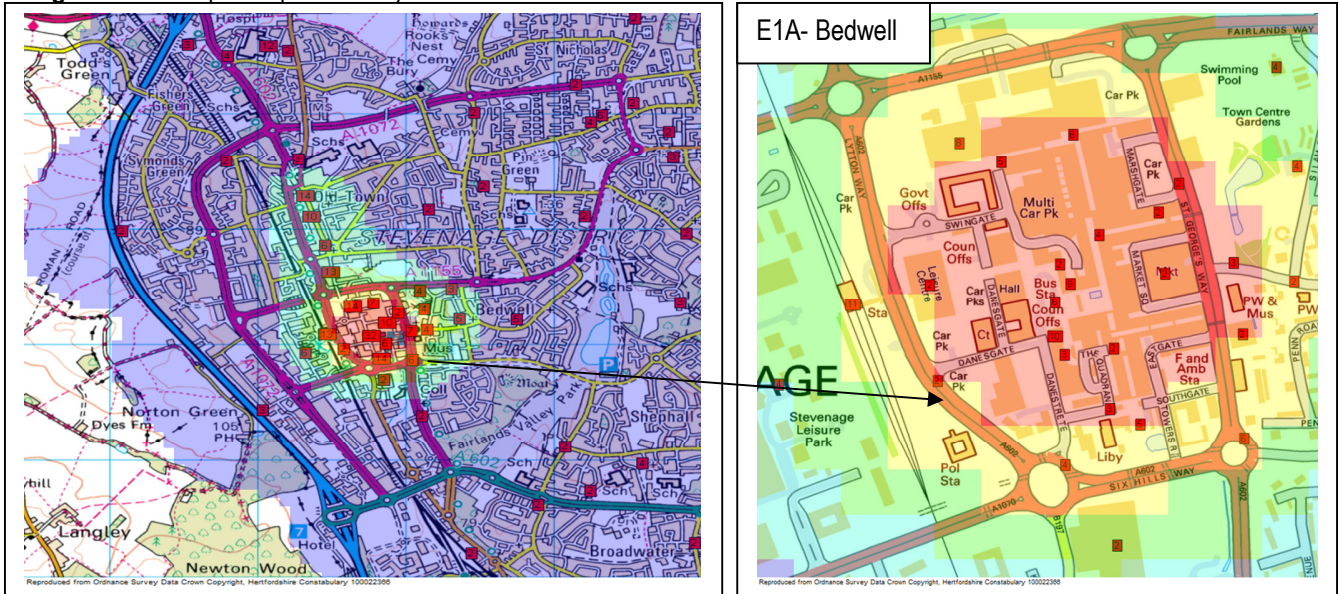
**Street Location**

The table below shows the street names with the highest recorded number of Alcohol incidents.

Street names	2012	2013	2014	2015	Total
HIGH ST		19	13	3	35
TOWN SQ		9	17	4	30
COREYS MILL LN		7	9	1	17
LYTTON WAY		9	7		16
THE FORUM		5	8	1	14
QUEENSWAY		3	7	1	11
SILAM RD		3	4	3	10
ST GEORGES WAY		1	7	1	9
THE OVAL		2	6	1	9
DANESTRETE		2	4	1	7

7 /10 locations in the above table are from E1A – Bedwell and this accounts for 61.3 % of the offences within the top 10 locations for the three year period analysed.

**Figure 23 – Hotspot map for three years data for Alcohol related ASB**



As you can see from the Hotspot maps above the hot area for Alcohol related ASB is E1A – Bedwell.

Seasonal trend

**Figure 21 – Table of seasonal counts 2013/14**

	2013/14			
<b>Beat/Month</b>	Apr - Jun	Jul - Sep	Oct - Dec	Jan - Mar
E1A - Bedwell	19	17	18	18
E1B - Old Town	10	12	7	4
E1N - Woodfield	1	1	11	4
E1F - Shephall	2	5	3	2
E1H - St. Nicholas	1	2	0	2
E1L - Martins Wood	1	2	2	2
E1M - Long Meadow	0	3	1	2
E1C - Pin Green	1	4	0	1
E1D - Chells	0	4	1	1
E1E - Chells Manor	1	2	1	1
E1G - Roebuck	3	3	3	1
E1J - Symonds Green	1	4	1	1
E1P - Great Ashby	0	0	0	1
E1K - Bandle Hill	0	0	1	0
<b>Total</b>	40	59	49	40

**Figure 22 – Table of seasonal counts 2014/15**

Beat Month	2014/15			
	Apr - Jun	Jul - Sep	Oct - Dec	Jan - Mar
E1A - Bedwell	13	24	27	16
E1B - Old Town	11	5	7	4
E1L - Martins Wood	5	5	4	1
E1N - Woodfield	4	2	1	1
E1F - Shephall	3	3	0	0
E1G - Roebuck	3	1	4	1
E1E - Chells Manor	2	0	1	0
E1C - Pin Green	1	1	1	1
E1H - St. Nicholas	1	0	2	0
E1M - Long Meadow	1	0	0	5
E1P - Great Ashby	1	0	0	0
E1D - Chells	0	1	0	0
E1J - Symonds Green	0	1	2	0
E1K - Bandle Hill	0	1	1	0
<b>Total</b>	<b>45</b>	<b>44</b>	<b>50</b>	<b>29</b>

**Comparison of seasons:**

When comparing the two tables above you can see that figure 21 shows – July – September as the seasonal high with E1A- Bedwell being the highest beat. Figure 22 shows October – December as being the seasonal high with E1A – Bedwell again being the highest beat.

Over the last two years the seasonal high had change each year so no comparison or pattern can be found.



## Appendix B

### SoSafe actions concerning the NTE for 2015/16

2.3	<b>Monitor night time economy</b>				
2.3a	Develop relationships with NTE door supervisors to improve communication and intelligence sharing. Schedule regular meetings to discuss issues and means to improvement.	Police / SBC Licensing Teresa Patten / Jeff Mason	April 2016	Existing resources / officer time.	1. Schedule at least 2 meetings this year with door supervisors and taxi marshall.  2. 5% annual decrease in serious violent crime
2.3b	Engage with Taxi Marshal for weekly reports re issues in Old Town NTE – report to ODG.	Police / SBC Licensing Teresa Patten / Jeff Mason	June 2015	Purchase radio and body worn camera for taxi marshall.	3. Weekly reports from Taxi Marshall.
2.3c	Carry out test purchases to ensure that licensees are complying with objectives of the Licensing Act 2003.	Police / SBC Licensing Teresa Patten / Jeff Mason	April 2016		4. At least 3 test purchase operations undertaken this year.
2.3d	Engage with and support Street Pastors for patrols in Old Town.	All	Ongoing	Provide £1000 grant to street pastors.	5. Street pastors patrolling at busy times of year. .
2.4	<b>Support Watch schemes</b>				
2.4a	Increase Neighbourhood Watch membership by 30%	Police WLO & HertsWatch	April 2016	Existing resources / officer time.	1. 1000 new NHW members by year end.

2.4b	<p>- through street meets, events, social media.</p> <p>Fund PubWatch online, and continue to develop and increase membership to include neighbourhood centres, through proactive targeting and licensing visits.</p>	<p>Police / SBC Licensing Teresa Patten / Jeff Mason</p>	<p>April 2016</p>	<p>Funding for publicity materials.</p> <p>£500 per annum online fee.</p>	<p>2. 10 new Pub Watch members by year end.</p>
------	---	--	-------------------	---	---